



JUNE *
VOLUME 50 * ISSUE 6

President's Message



Greetings to all,

Welcome to June! May brought us some much needed rain. Hope you are not water logged!!!! Thankfully, we did not get rained out at the Memorial Day Service at the Kerrville Courthouse on Monday. It was one of the best attended services I have seen in years. Our speaker was Col. Jack Lousma, US Marine Corps (Retired) What a moving and inspirational address he made. Thanks to the ladies of KCWC for being there. Rose took lots of pictures.

Our general meeting will give us time to meet the ladies receiving this year's scholarship money. We will be giving a total of \$14,500 this year! KCWC has now given \$216,000 in the history of our organization. What a great job our members do in raising money! Even in our COVID year, we came through, so thank you for buying raffle tickets, participating in Bessie Bovine and your private donations. You should be so proud of what we do as an organization. We truly make a difference in ladies' lives!

So lace up your boots, we have much to get accomplished this year. Remember, July 7th is our dinner to honor our Veterans. The event will be held at The Dietert Center. For the last few years, we have brought pot luck dishes to share and had a dinner instead of a lunch. We have many more veterans attending since we changed the venue and time. Please get with Rose Bradshaw or Waverly Jones to see how you can help.

Trish Wilson needs your recipes for our cookbook and also needs 10 ladies' names and addresses for the invitation list for the NO GO GALA. Kathy LeSturgeon has sent out messages to you with directions on how to supply these. Take the time to help our Ways and Means Chairs. Remember how good it feels to give out scholarships. Your participation is what helps make the money.

Jo Carol Smith
Interim President

2021!



What's Inside:

Officers & Committee Chairs	2
Important Notices	2
Beautification	3
Committee Notes	4
Recipes	5
Volunteer Opportunity	6
Member Opportunities	7
Moments	8-9
Membership Application	10-11
Bag pattern	12
Birthdays/Anniversaries	13
Winner Winner Chicken Dinner	14
More Moments	15
Ribbon Cuttings	16

Officers

Ann BuckPresident
 Sandy Franz1st Vice President
 Amber Newberry2nd Vice President
 Kelli DunbarSecretary
 Jannell Bullock Treasurer

Committee Chairs

Auditing Brenda Beaty
 Beautification Ruth Bauer
 Chaplain Ginny Bull
 Christmas Lighting Paula Wilson
 Christmas Parade Jannell Bullock
 Deli Program Karen Argence
 Goodwill Mary Sue Douville
 Historian Edna Vandiver
 Hostess Sherri Wineriter
 Membership Amber Newberry
 Multimedia Tammy Parkhurst-Myers
 Newsletter Rose Bradshaw
 Outstanding WomanKaren Martin
 Parliamentarian Waverly Jones
 Property Rose Bradshaw
 Publicity Rose Bradshaw
 Scholarships Jody Jacoby
 Communication Kathy LeSturgeon
 Ways and Means Margie Jetton
 Welcome/Ribbon Cuttings..... Kelli Dunbar
 Volunteers To GoRose Bradshaw

Important Notices



- Sew Toiletry Bags for Veterans, examples & patterns are available
- Diabetic Socks for Veterans- any size, men's or women's, both needed
- CAM food bank donations- non-perishables:

CAM appreciates all donations but cash goes a lot further than items. Thank you for your Donations!



News & Views

Is the official publication of the Kerr County Women's Chamber, Inc. and is published monthly. For more information about the KCWC, please visit our website at:

www.kerrcountywomenschamber.org

Our mission is to work for the betterment of the Kerrville area community through charitable, civic, and environmental projects and programs.

© Copyright 2016, Kerr County Women's Chamber, Inc., All Rights Reserved



Beautification Winner



Beautification Award
presented to
Beverly & Nelson Pittman
On
105 Lexington, Kerrville, TX 78028
By

Kerr County Women's Chamber, Inc.



~ Beautification Award ~

Ruth Bauer & Janie Altgelt together with the Beautification Committee

Search and present a monthly award for the business or individual that show beauty in our community.

YOU CAN HELP BY NOMINATING A WORTHY YARD.

deli program

Items in need for the community food banks.

TOILETRIES - NON PERISHABLE ITEMS - AND FUNDS

(Needed most often are general pantry items like peanut butter, cereal, canned goods, and toiletries.)

Benefiting: CHRISTIAN ASSISTANCE MINISTRY

QUESTIONS, CALL
Karen Argence
830-370-3923

Committee Notes

RIBBON CUTTINGS

MAY

14th Nations Landscape

25th Key & Key Realty



MULTIMEDIA

Please submit your pictures & happenings!

We want to feature YOU!

Committee Chairs please remember to submit your happenings for the newsletter to Rose Bradshaw, rose.bradshaw@sofastprinting.net

OUTSTANDING WOMAN OF THE YEAR

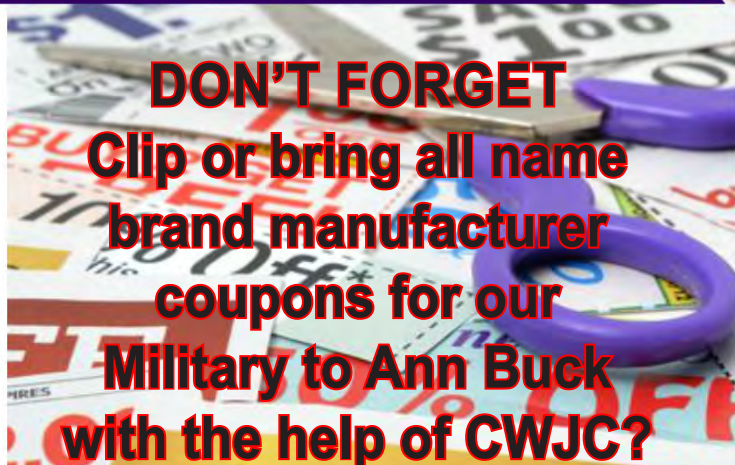
PDF application on website. **ON LINE.**

TELEPHONE

If you are not receiving emails please contact Kathy LeSturgeon at kerrcowc@yahoo.com.
Reservations must be in by deadline for meetings by request of Rails.

SEND EXPIRED COUPONS TO MILITARY FAMILIES

www.militarywivessaving.com



DON'T FORGET

Clip or bring all name brand manufacturer coupons for our Military to Ann Buck with the help of CWJC?

Any questions, contact Ann Buck 830-928-5977.

DELI

Don't forget to bring your deli donations of reusable plastic bags or dollars and non perishable items. You will get an extra door prize ticket for your donations! Items such as cereals, instant potatoes, canned goods, peanut butter, jelly, popcorn, snacks, juices are needed. Also, laundry soaps, toiletries, and always cash donations are accepted.

GENERAL MEETING

Lunch begins at 11:30 at Rails Event Center on Schreiner St., with the meeting starting at noon. Lunch cost is \$15.00. **MUST** make your reservation for yourself and your guest's by the given deadline. **You may cancel your reservation up to 24 hours before meeting by e-mailing or calling Kathy LeSturgeon** The General Meeting is on the first Wednesday of each month.

Payment by check is preferable.



NEWSLETTER

This newsletter is for you, and we want to continue showing and sharing what we do personally and as an important part of our community.

So, submit all happenings to rose.bradshaw@sofastprinting.net

SHARE FAVORITE RECIPES AND QUOTES

Herb Lime Butter Sauce

1 large garlic clove, chopped
1/4 cup fresh lime juice
1 teaspoon salt
1/2 teaspoon black pepper
1 stick (1/2 cup) unsalted butter, melted

Preparation

Purée garlic with lime juice, salt, and pepper in a blender until smooth. With motor running, add melted butter and blend until emulsified, about 30 seconds.

Ranch Dressing

Whisk 1/2 cup buttermilk
1/4 cup mayonnaise
2 tbl. each chopped parsley and chives, 1 tbl. cider vinegar, 1/4 tsp. kosher salt, a pinch of garlic powder and a dash of hot sauce.

Light Ranch Dressing

Whisk 1/2 cup buttermilk
1/4 cup nonfat Greek yogurt
2 tbl. each chopped parsley and chives, 1 tbl. cider vinegar, 1/4 tsp. kosher salt and 1/4 tsp. sugar

Cherry Tomato Salsa

Toss 1 pint quartered cherry tomatoes, 1 chopped seeded jalapeno, 1/4 cup chopped red onion, 2 tbl. each chopped cilantro and parsley, the juice of 1 lime and salt to taste.

Fresh Salsa

Soak 1/2 cup chopped white onion in cold water (15 min.) then drain. Toss with 3 diced tomatoes, 1 diced seeded jalapeno, 1 minced garlic clove and 1/3 cup chopped cilantro. Add lime juice and salt to taste.

Fruit Punch

Makes 3 gallons
1 large orange juice frozen
1 small limeade frozen
1 large strawberry jello
2 large quarts pineapple juice
1 package strawberries
Add water - 3 quarts

Freeze and then thaw 2 hours before adding ginger ale

Punch

1 can frozen orange juice
1 can Hawaiian Punch
1 bottle grapefruit pop or ginger ale
1 can pineapple juice

Strawberry Punch

2 cups sugar
6 cans boiling water
2 1/2 cups orange juice
4 cups unsweetened pineapple juice
3 - 10 oz. pkg. frozen strawberries
64 oz. lemon lime sprite

Dissolve sugar in boiling water and stir in next 4 ingredients in large plastic container and freeze 1 1/2 hours before serving. Remove and place in punch bowl and break into chunks and add sprite until slushy.

Easy Key Lime Pie

1 1/2 cups graham cracker crumbs
(one packet from a box of 3 packets)
1/3 cup sugar
6 tablespoons unsalted butter, (melted)
3 cups sweetened condensed milk
1/2 cup sour cream
3/4 cup key lime juice

Preheat the oven to 375 degrees. Mix graham cracker crumbs, sugar and butter well. Press mixture into an 8 inch pie plate. Bake for 7 minutes. While the crust is baking, make the filling. In a bowl, combine condensed milk, sour cream, lime juice and add to the crust. Put it back in the oven for 5 to 8 minutes until you start to see the smallest of bubbles forming.

Apple Crisp

1 white cake mix
1 stick butter
2 cans apple pie filling

Melt butter and mix with cake mix until crumbly. Pour pie filling into oblong pan. Top with cake mix and bake at 350 for 30 minutes.



Share one of your favorites - email to rose.bradshaw@sofastprinting.net

Submit your recipes, hints or quotes with a small message or orientation. *Thank you*

Volunteer Opportunity

Opportunities for Kerr County Women's Chamber Volunteers.
Please call or email me if interested!!

830-377-8948 or rose.bradshaw@sofastprinting.net

1. Relay For Life Rummage Sale - June 5th @ HCYEC
2. July 7th - Military Appreciation Diner - Dietert Center

Help thy neighbors
Be Kind
Be Masked



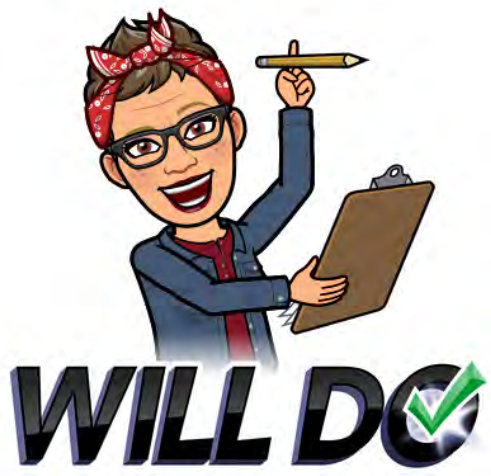
I want to thank each of you members for ALL your time in volunteering and reaching Kerr County Women's Chamber out into the public.

Rose Bradshaw
Volunteers to Go Chairwoman

Waverly Jones
Volunteers to Go Co-Chairwoman



Our mission is to work for the betterment of the Kerrville area community through charitable, civic, and environmental projects and programs.





Monthly Member Highlight Highlight Details

- Highlighted Member will be listed on general meeting agenda.
- Opportunity to set out promotional items for all luncheon tables.
- Highlighted Member must arrive at 11:30 that month to have time to greet and visit with her own table guests.
- Highlighted Member will introduce self mini intro to what they do and their table guests – 5 minutes.
 - o Could ask an ice breaker question to all guests at her table and intro them by
 - Favorite ice cream flavor
 - First job
 - Favorite vacation
 - ie. This is Tara Bushnoe and she worked nights sorting mail at the post office as a summer job

Remaining questions

- Only one Monthly Member Highlight each monthly meeting.
- Donation of at least \$25 to be Monthly Member Highlight.
- Seating of attendees at the Highlighted Member table will be at random as they arrive.
- Starting the program in May with Waverly Jones with the Dietert Center.
- Members interested in becoming the MMH for future months, contact Trish Wilson at trish@trishwilson.live or 830-459-3820; payment can be made via online, or at the meeting for the month assigned.
- Ways and Means Committee / Trish Wilson contact.

Want to be the HIGHLIGHT of the next KCWC Monthly Meeting?

KCWC is introducing a new program that will help the entire membership get to know one another a little better in the months ahead. We are looking for members who would like to highlight their business during our monthly meetings. For a minimum \$25 donation to KCWC, a member is able to:

- Place promotional items on all the tables at the luncheon for members to take.
- Host their own table by getting to know each person sitting there with a great icebreaker question (What is your favorite vacation place?).
- Promote their business during the meeting with a brief 5 minute commercial.
- Introduce their tablemates with the answers to their icebreaker question.
 - o This is Rose, her favorite vacation place is Italy.
- Have their Monthly Member Highlight in the Monthly Newsletter as well.

This is an opportunity to get to know each other better and really support each other in business. Consider being the HIGHLIGHT Member of a KCWC Monthly Meeting in the future!

**Don't miss
your
opportunity
to be the
monthly
highlight!**

Member Moments -



Member Moments - Happenings



**KERR COUNTY WOMEN'S CHAMBER, INC.
MEMBERSHIP INFORMATION FORM**

<i>Amt pd:</i> _____
<i>Date pd:</i> _____
<i>Method:</i> _____

Date completed: _____

_____ New Member _____ Renewal - Member since _____

Please complete this information and give to the Membership Chair with your membership dues of \$30.00 payable to KCWC (\$15 if you are a new member joining during November – April). You can also mail this form and your dues to: Kerr County Women's Chamber, Inc. PO Box 290621, Kerrville, TX 78029. Your membership application is not complete until dues are received.

Name: _____ **Home Phone:** _____

Address: _____ **Work Phone:** _____

City: _____ **State:** ____ **Zip:** _____ **Cell Phone:** _____

E-Mail: _____ **Fax #:** _____

Birthday: Month _____ **Day** _____

Business Name: _____ **Position:** _____

Spouse: _____ **Anniversary:** _____ **Children:** _____

Hobbies: _____

Other Organizations: _____

**PLEASE INDICATE BELOW ON WHICH COMMITTEE YOU WOULD LIKE TO SERVE:
(You may choose more than one)**

_____ **BEAUTIFICATION:** Selects monthly recipients of the Beautification Award, develops plans for KCWC beautification projects in our community, represents KCWC at patriotic events and ceremonies such as Veterans Day and Memorial Day.

_____ **BYLAWS:** Responsible for updating the By-laws and shall be chaired by the Parliamentarian.

_____ **CHRISTMAS LIGHTING:** Responsible for the Christmas lighting program at Tranquility Island or any other Christmas lighting project that the Corporation may vote to sponsor; aid other organizations in promoting projects for "Christmas in the Hills"; manage and coordinate such projects as may be approved by the Board.

_____ **COMMUNICATION:** Call board members and general members to take reservation for meetings; obtain a current membership list from the Membership Committee monthly; inform the luncheon host of total number of reservations for each meeting; provide a reservation list of members and guests to the Treasurer before each meeting; call members for special events or notices as requested by the Board.

_____ **DELI PROGRAM:** Collect food and cash donations provided by members at the monthly membership meetings. Deliver items to the designated food bank. Shop for food bank items needed using cash donations.

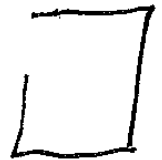
- ___ GOODWILL: Responsible for sending cards to members in hospital, make monetary memorials on death of immediate family members. Announce birthdays for the month at each meeting.
- ___ HOSTESS: Make arrangements for luncheons and special meetings of the Corporation; be responsible for hostesses to greet members and visitors at meetings; plan and implement decorations for regular and special meetings of the Corporation.
- ___ MEMBERSHIP & HOSPITALITY: Promotes membership expansion through the encouragement of renewals and recruitment of new members. Arranges for new member name badge/t-shirts and promotes involvement of new members. Hospitality committee greets members at the door each meeting and hands out door prize tickets for attendance and wearing name badges to meetings. Also handles collection of door prizes for monthly drawings.
- ___ MULTIMEDIA: Shall prepare a Newsletter for distribution at each regular meeting to include birthdays, illnesses, grand openings, new member introductions, special events (both upcoming and after the fact) and any other newsworthy items to keep membership informed. Chair to oversee the website design and maintenance.
- ___ OUTSTANDING WOMAN AWARD: Distributes and collects applications in July and August; arranges for Applications to be judged so winner is determined in time for presentation at the Annual Chamber of Commerce Banquet in September; has a plaque prepared for presentation by KCWC President.
- ___ PROPERTY: Keep inventory of all KCWC property; be responsible for loan and return of all such property; responsible for securing and maintaining rental storage facilities.
- ___ PUBLICITY: Responsible for the releases to the news media, insuring that they are timely, accurate and in the interest of the Corporation; Present notices of all meetings and events to the news media in time for the monthly Calendar of Events, including date, time and place of meetings, the agenda and an invitation to all interested to attend. Present follow up articles to the news media; arrange for reporters and/or photographers to be present at significant Corporation events; assist all committees with publicity campaigns.
- ___ SCHOLARSHIPS: Distribute applications to women in the Kerr County area who wish to further their career thru education, promoting the Women Helping Women Scholarship Program. Responsible for publicity, determine worthy recipients, and make arrangements to introduce the scholarship winners at the general meeting.
- ___ VOLUNTEERS TO GO: Volunteers to Go assists other civic organizations with events needing help as requested.
- ___ WAYS & MEANS: Develops and organizes events and fund raising projects other than. Special Events, as approved by the membership in order to fund the KCWC community projects and Women Helping Women Scholarships Program.
- ___ WELCOME & RIBBON CUTTING: Serve as official representative of the Corporation at special events upon request; attend all business grand openings or see that the Corporation is represented by one of our members; invite new business owners to introduce their business at general membership meeting; report new business to the Board and general membership monthly, keeping adequate records for the annual report.

Did a KCWC member introduce you to the organization? Yes No If so, who? _____

Cloth Bags for Female patients at VA

Original cloth size: 44" x 12". Also need 37" yarn or heavy string and 2 buttons.

Iron cloth flat. Fold lengthwise with right sides facing and sew right side from top to bottom. Sew left side from bottom to 14 inches from the top; stop.

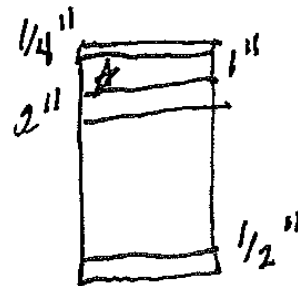


To create an opening on the left side, fold under remaining 7-8" on left side along seam line and sew each fold line from previous stopping point to the top on both sides of seam. Backstitch along the bottom split.



Fold top selvage down inside bag 2" all the way around the top from back left side to front left side; iron flat; do this again so there are two 2" folds. Iron flat. Sew the fold three times: 1/4" from top; 1" from top; 2" from top. Backstitch all ends.

Size should now be 18-18.5" long and 11" wide.



Use safety pin to pull 37" yarn or heavy string through middle casing line from left front to left back. Thread each end of yarn through a large button and tie end securely under each button. Sew 1/2" seam along bottom of bag for added strength and to shorten the length slightly. Finished!

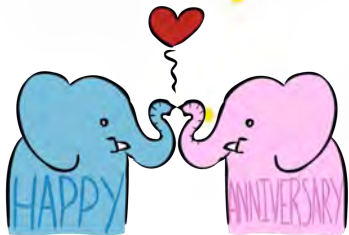
Member Moments





**WINNER-WINNER
Chicken
DINNER**







We are growing and if you have a business, you can schedule a ribbon cutting through the womens chamber. Contact Rose or Kelli to get you scheduled.

Special Thanks To Our Continued Supporters



The Hill Country
COMMUNITY JOURNAL
Your News is Our News

